

www.tpl-vision.net

### NEW BL BAR

The unavoidable alternative to fluorescent lighting !

TPL VISION is glad to introduce you the new version of its **BL BAR**, the powerful and homogeneous LEDs bar for machine vision applications :

- diffuse directive lighting to **emphasize products brightness**
- a **backlight lighting for web inspection** for quality control, surface area faults, marking reading, lack of material, see holes, splits, lack of glue, etc.



**Linear backlight lighting achieves excellence !**

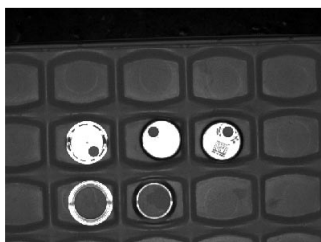
This new version achieves excellence with its **operating area equal to its size**, its **80% homogeneity**, its **improved electronics** and its capability to **reach a size up to 3,4 meters !**

**5 colours available : white, red, green, blue and infrared.**

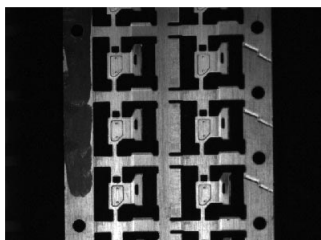
[Want to know more? Click here for detailed documentation](#)

### APPLICATIONS

#### Directive, diffuse and homogeneous lighting



Here, the reflections of circular metal pieces are totally removed



Again, the shiny copper piece emits no reflection thanks to the BL BAR mounted directive lighting

#### Backlight lighting for web inspection



Here, the BL BAR mounted backlight allows continuous quality examination of a web with a linear camera

Discover the BL BAR immediately on [www.tpl-vision.net](http://www.tpl-vision.net)

The unavoidable alternative to fluorescent lights, the BL BAR aims to replace neon that it surpasses at all quality levels :

LEDS	FLUO
THIN BANDPASS	LARGE SPECTRUM
STABLE BRIGHTNESS	SHIFTING BRIGHTNESS
LIFE CYCLE >50 000 Hours	LIFE CYCLE <8000 Hours
CONCENTRATED POWER	DIFFUSE POWER
ONLY 1 KM ZERO	HIGH SUSTAINMENT COSTS
CUSTOMIZABLE SIZE	ONE FIXED SIZE
STROBE OR CONTINUOUS	CONTINUOUS ONLY
CUSTOMIZABLE POWER	FIXED POWER

[Find out all technical informations and detailed BL BAR plans on our website. Click here for a quick access.](#)

TPL VISION - BL BAR - APRIL 2010

[If you do not want to receive anymore such emails from us click here](#)