

[If you can't see this email, please click here to display it on your browser](#)



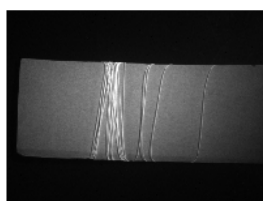
Designer & Manufacturer of LED
Lights for Machine Vision

www.tpl-vision.net



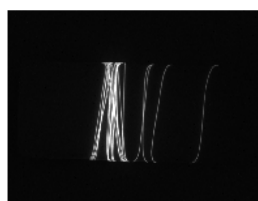
**"DURING SUMMER
VACATIONS IT'S TIME TO
REPLACE WHAT WORKS
WRONG, AND TO IMPROVE
WHAT WORKS FINE."**

A machine vision application's efficiency depends upon :



A bad lighting

OR



A good lighting

You have changed suppliers and the **camera needs new settings** ? You have **new product colors** to pass on the assembly line? Your vision application control has never really **worked well**? You want to anticipate a product change? Your robot misses the check up from time to time?

Maintenance or **continuous improvement teams**, the reliability of the huge investment in you're in charge, is your responsibility. In Machine Vision systems, **lighting is a critical component**, and **TPL Vision is your LED light expert**. Contact us and see how far we can help you to enhance availability, **reliability**, and **investment** profitability of your facilities.

[Go to our website to discover power LEDs lightings](#)

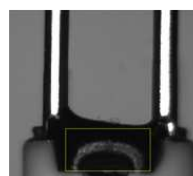
Example of application

Application: controlling the settlement of a resin on electrical contacts with two cameras (top view and side view).

The problem: presence of reflections on the resin and lack of contrast compared to contacts. Monitoring had to be done by an operator.

Solution: combination of two red domes + a tailor made infrared backlight + filter.

Benefits of the solution: the system works, the domes remove reflections and the backlight increases the contrast.



Before



After

[Detailed documentation, plans and more informations available on TPL-VISION.net](#)

Are you looking for more machine vision lightings knowledge ? Concepts, techniques, methods and products, TPL VISION shares with you its know-how and answers all your questions in our Frequently Asked Questions page.

Only on our website: www.tpl-vision.net/f-a-q.html
So read and/or ask a question and **become unbeatable** !

[TPL VISION](#) - MAINTENANCE - JULY 2010

[If you do not want to receive anymore such emails from us click here](#)